



K O C H • H A Z A R D  
A R C H I T E C T S

ARCHITECT

PROJECT MANAGER: KEITH THOMPSON, AIA  
PHONE: 605.336.3718  
EMAIL: KTHOMPSON@KOCHHAZARD.COM



A S S O C I A T E D  
C O N S U L T I N G  
E N G I N E E R I N G  
I N C O R P O R A T E D

MECHANICAL ENGINEER

PROJECT MANAGER: RYAN VAN DER BILL, PE  
PHONE: 605.357.4779  
EMAIL: RVANDERBILL@ACEINET.COM

ELECTRICAL ENGINEER

PROJECT MANAGER: BRAD SHOUP, PE  
PHONE: 605.357.4775  
EMAIL: BSHOUP@ACEINET.COM



S T R U C T U R A L E N G I N E E R I N G  
A S S O C I A T E S

STRUCTURAL ENGINEER

PROJECT MANAGER: GREG HANNESTAD, PE  
PHONE: 605.334.0188  
EMAIL: GREG@SEASD.COM

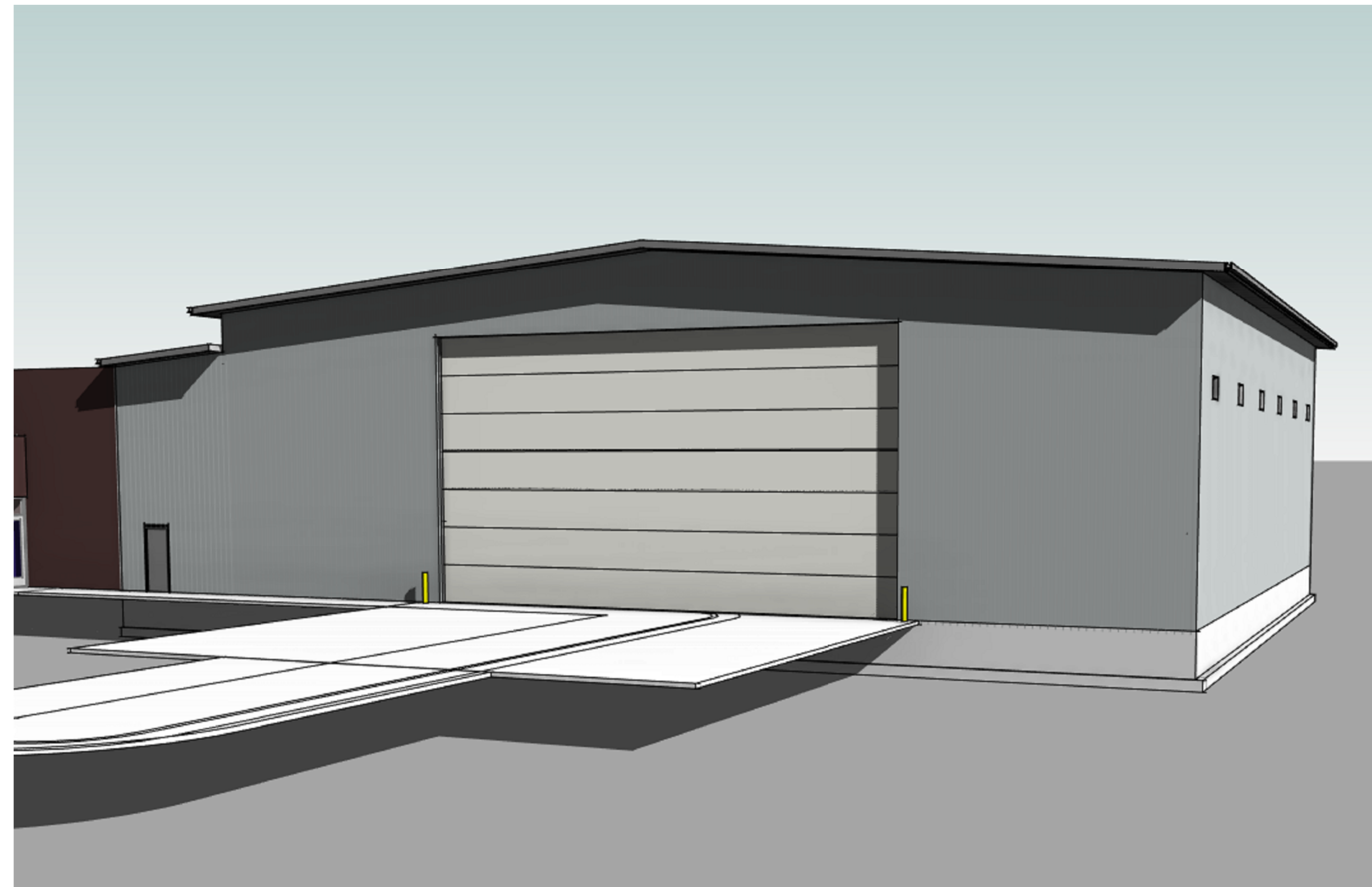
# CTE ADDITION

## HURON SCHOOL DISTRICT 2-2

### HURON, SD

ARCHITECTURAL  
A0.0 CODE REVIEW, ORIENTATION & LEGENDS

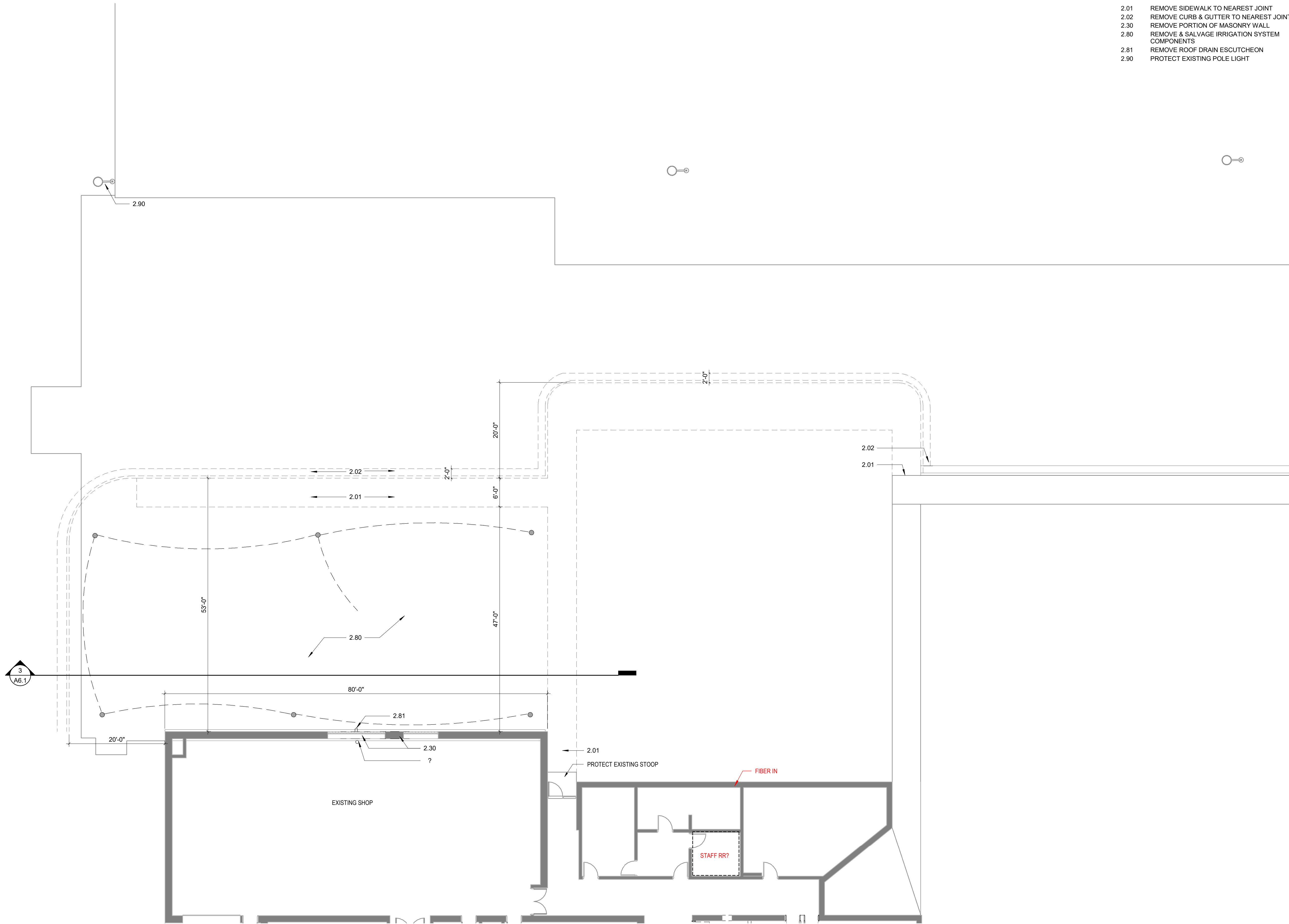
ARCHITECTURAL  
A1.1 FIRST FLOOR PLAN  
D1.0 DEMOLITION PLAN  
A1.0 ARCHITECTURAL SITE PLAN  
A3.1 FIRST FLOOR REFLECTED CEILING PLAN  
A4.1 ROOF PLAN & DETAILS  
A5.1 BUILDING ELEVATIONS  
A5.2 EXTERIOR PERSPECTIVES  
A6.1 BUILDING SECTIONS  
A6.2 WALL SECTIONS & DETAILS



25% DESIGN DEVELOPMENT  
1.4.2021

**KEYNOTES**

- 2.01 REMOVE SIDEWALK TO NEAREST JOINT
- 2.02 REMOVE CURB & GUTTER TO NEAREST JOINT
- 2.30 REMOVE PORTION OF MASONRY WALL
- 2.80 REMOVE & SALVAGE IRRIGATION SYSTEM COMPONENTS
- 2.81 REMOVE ROOF DRAIN ESCUTCHEON
- 2.90 PROTECT EXISTING POLE LIGHT



**DEMOLITION PLAN**  
1" = 10'-0"

PROJECT NO.:	DRAWN BY:
1849B	ADG
DATE	COPYRIGHT
1.4.2021	2018
PROJECT	
CTE ADDITION	
HURON SCHOOL DISTRICT 2-2	
HURON, SD	
SHEET	
DEMOLITION PLAN	

**D1.0**

CODE REVIEW

KEYNOTE SYSTEM

REFER TO THE KEYNOTE LEGEND ON EACH DRAWING FOR KEYNOTE CONTEXT. EACH KEYNOTE REFERENCE NUMBER CONSISTS OF A 1 OR 2 DIGIT PREFIX FOLLOWED BY A PERIOD AND A 1 TO 3 DIGIT SUFFIX. THE PREFIX IDENTIFIES THE SPECIFICATION SECTION WHICH GENERALLY COVERS THE ITEM REFERENCED. THE SUFFIX IDENTIFIES THE SPECIFIC ITEM. NOT ALL KEYNOTES ARE REFERENCED ON EACH DRAWING SHEET. KEYNOTE REFERENCE NUMBERS ARE NOT INTENDED TO INFLUENCE THE CONTRACTOR'S DIVISION OF THE WORK AMONG SUBCONTRACTORS OR TO ESTABLISH THE EXTENT OF WORK TO BE PERFORMED BY ANY TRADE.

GENERAL NOTES

- A. THIS PLAN AND SQUARE FOOTAGES LISTED ARE FOR CODE REVIEW ONLY AND SHOULD NOT BE USED FOR OTHER PURPOSES. SEE FLOOR PLANS FOR CONSTRUCTION INFORMATION.
- B. RATED ASSEMBLIES ARE INDICATED AS PER CODE REQUIRED MINIMUMS. ACTUAL CONSTRUCTION ASSEMBLIES MAY EXCEED CODE REQUIRED MINIMUMS.

APPLICABLE CODES & REGS

FOLLOWING IS A LIST OF LOCAL, NATIONAL BUILDING CODES AND OTHER APPLICABLE REGULATIONS THAT MAY APPLY TO THE DESIGN, CONSTRUCTION AND OPERATION OF THE FACILITY. LOCAL AMENDMENTS APPLY.

INTERNATIONAL BUILDING CODE 2015 - WITH LOCAL AMENDMENTS

THE FACILITIES REQUIREMENTS OF TITLE II OF THE AMERICAN WITH DISABILITIES ACT (ADA) IN ACCORDANCE WITH ADAAG 2010

NATIONAL FIRE PROTECTION ASSOCIATION (NFPA) 2010

INTERNATIONAL FIRE CODE 2015

UNIFORM PLUMBING CODE 2009

INTERNATIONAL MECHANICAL CODE 2012

ASME BOILER AND PRESSURE VESSEL CODES

STATE BOILER SAFETY CODE

AMERICAN WATERWORKS ASSOCIATION (AWWA)

NATIONAL SANITATION FOUNDATION (NSF)

WILLIAMS-STEIGER OCCUPATIONAL SAFETY AND HEALTH ACT (OSHA)

ASHRAE'S STANDARD 90.1 - 2010 ENERGY EFFICIENT DESIGN OF NEW BUILDINGS

CITY ELECTRICAL ORDINANCES

STATE ELECTRICAL LAWS, REGULATIONS AND WIRING BULLETIN OF SOUTH DAKOTA

NFPA 70, NEC, CURRENT ADDITION

IEEE

NATIONAL BOARD OF FIRE UNDERWRITERS (NBFI)

NEMA

UNDERWRITERS LABORATORIES (UL)

ELECTRICAL TESTING LABORATORY (ETL)

ILLUMINATION ENGINEERING SOCIETY (IES)

AMERICAN NATIONAL STANDARDS INSTITUTE (ANSI)

CERTIFIED BALLAST MANUFACTURER (CBM)

SOUTH DAKOTA STATE GLAZING LAW

SOUTH DAKOTA STATE PLUMBING COMMISSION RULES AND REGULATIONS GOVERNING THE INSTALLATION OF PLUMBING

VERIFY ALL CODES

CODE PLAN LEGEND

ROOM TYPE	ROOM CODE KEY
### SF	AREA OF ROOM
###	AREA ALLOCATION PER OCCUPANT
### OCC	CALCULATED OCCUPANT LOAD
<b>DOOR</b>	
### *	<b>DOOR CODE KEY</b>
2	EFFECTIVE DOOR WIDTH
###	EGRESS WIDTH REQUIRED PER OCCUPANT
###	AVAILABLE EGRESS CAPACITY
###	ACTUAL CALCULATED EGRESS
<b>STAIR</b>	
### *	<b>STAIR CODE KEY</b>
.3	EFFECTIVE STAIR WIDTH
###	EGRESS WIDTH REQUIRED PER OCCUPANT
###	AVAILABLE EGRESS CAPACITY
###	ACTUAL CALCULATED EGRESS
E / X	POINT OF EGRESS / NUMBER OF OCCUPANTS
F.E.	FIRE EXTINGUISHER LOCATION SEE FLOOR PLANS FOR CABINET LOCATIONS
KB	KNOX BOX, VERIFY LOCATION WITH AHJ
.....	1/2 HOUR FIRE PARTITION
-----	1 HOUR FIRE PARTITION
- . - . - .	1 HOUR FIRE BARRIER
-----	2 HOUR FIRE PARTITION
-----	2 HOUR FIRE BARRIER
////	1 HOUR HORIZONTAL ASSEMBLY

REFERENCE SYMBOLS

NO.	COLUMN LINE OR GRID
NO. DW	BUILDING SECTION
NO. DW	DETAIL
#	WALL TYPE
#	DOOR
#	WINDOW
ELEV. BRG.	CONTROL ELEVATION
8'-0"	HEIGHT
N	NORTH
4.10	KEYNOTE
---	CENTER
---	HIDDEN, FUTURE OR EXISTING
NO. DWG	INTERIOR ELEVATION



431 N Phillips Avenue, Suite 200  
Sioux Falls, South Dakota 57104  
T: 605.336.3718  
F: 605.336.0438  
W: kochhazard.com

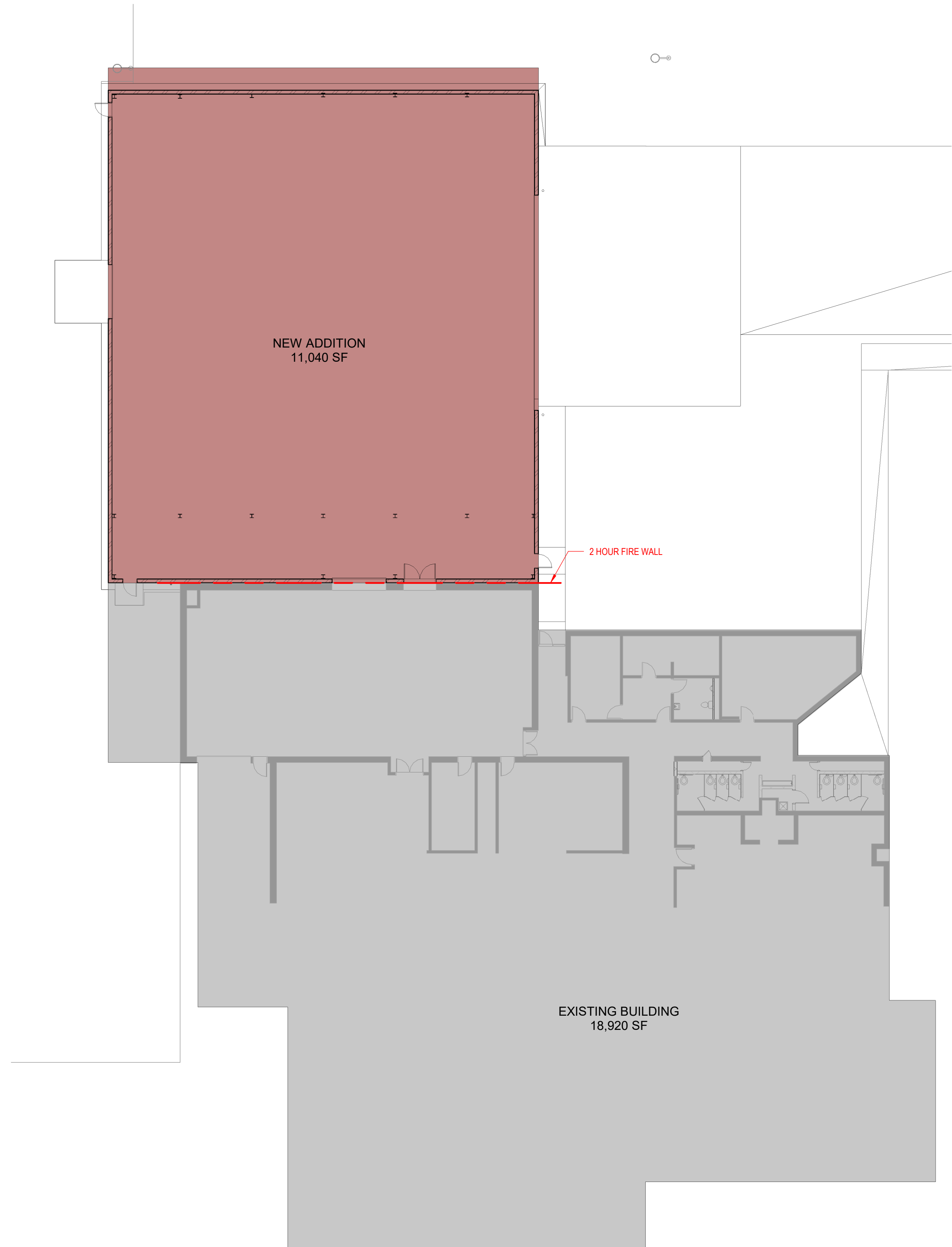
\*USE OR REUSE OF THESE DOCUMENTS BY THE OWNER OR OTHERS FOR PURPOSES OTHER THAN THOSE INTENDED, WITHOUT THE EXPRESS WRITTEN PERMISSION OF THE ARCHITECT, WILL BE AT THE USER'S RISK AND FULL LEGAL RESPONSIBILITY.

PROJECT NO.: 1849B  
DRAWN BY: KWT  
DATE: COPYRIGHT  
1.4.2021 2018

PROJECT  
CTE ADDITION  
HURON SCHOOL DISTRICT 2-2  
HURON, SD

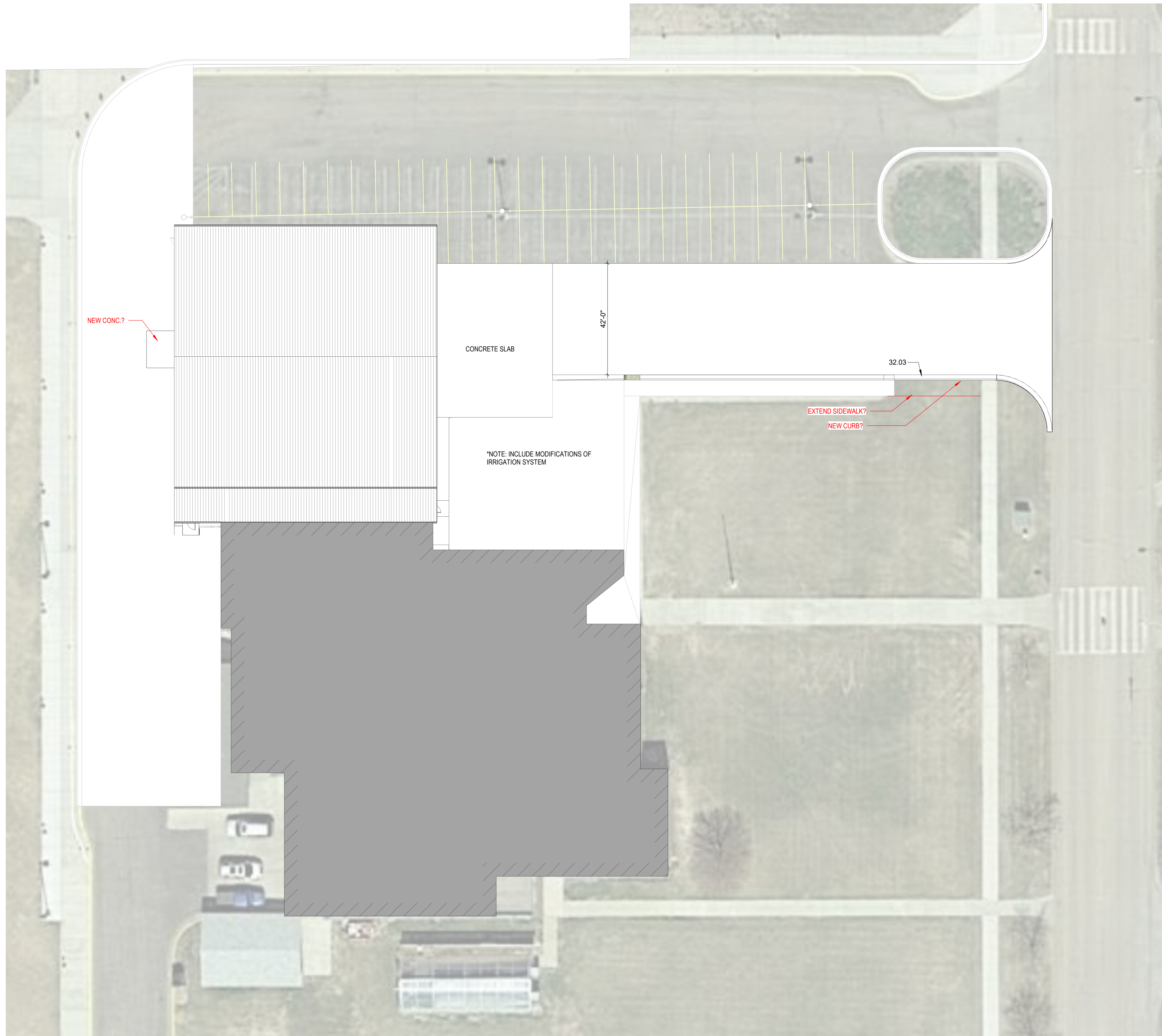
SHEET  
CODE REVIEW, ORIENTATION & LEGENDS

A0.0



FIRST FLOOR CODE PLAN  
1/16" = 1'-0"



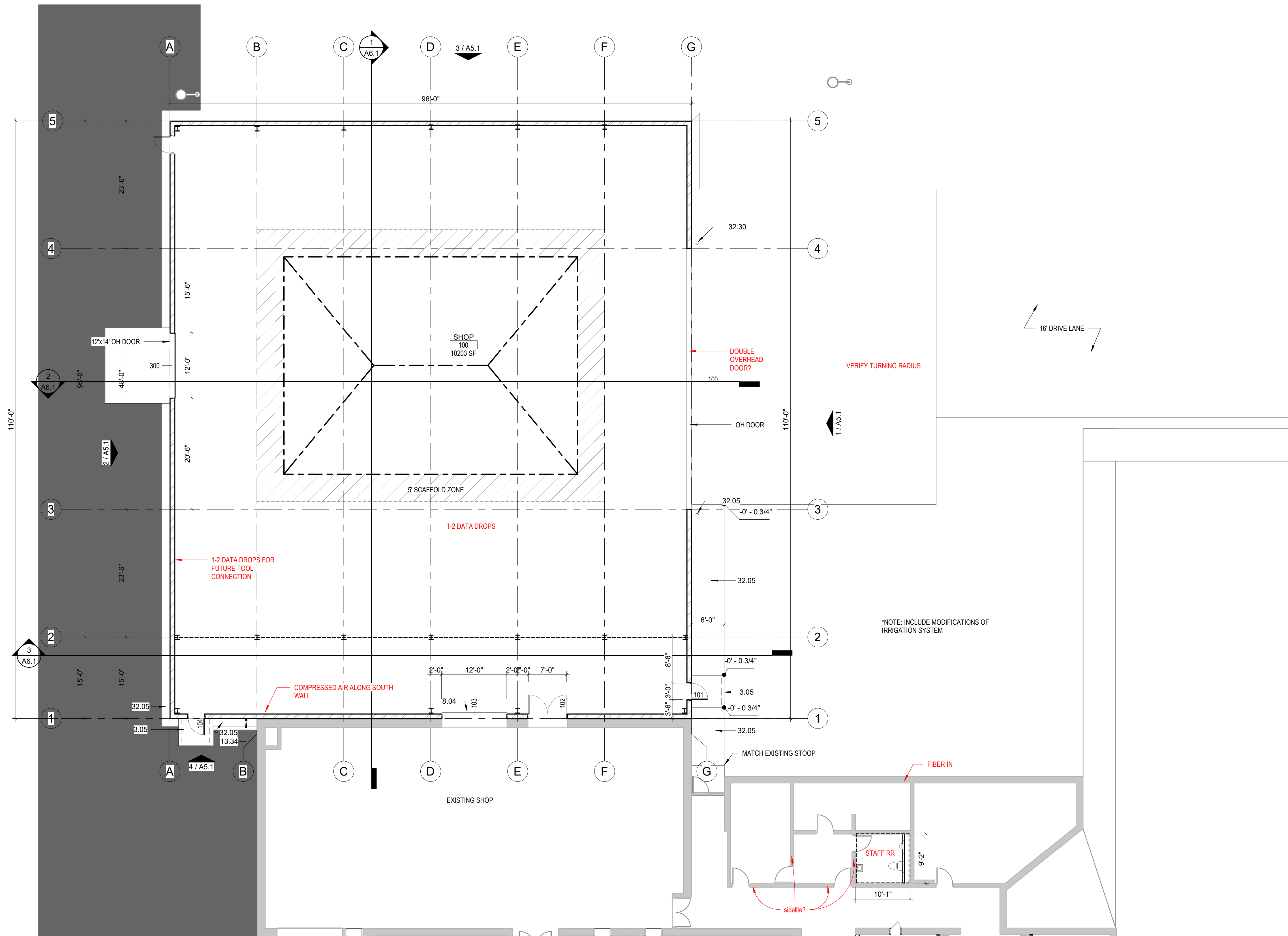


KEYNOTES

32.03 CURB AND GUTTER

PROJECT NO.:	1849B	DRAWN BY:	ADG
DATE	1.4.2021	COPYRIGHT	2018
PROJECT		HURON SCHOOL DISTRICT 2-2	
HURON SCHOOL DISTRICT 2-2		HURON, SD	
SHEET		ARCHITECTURAL SITE PLAN	



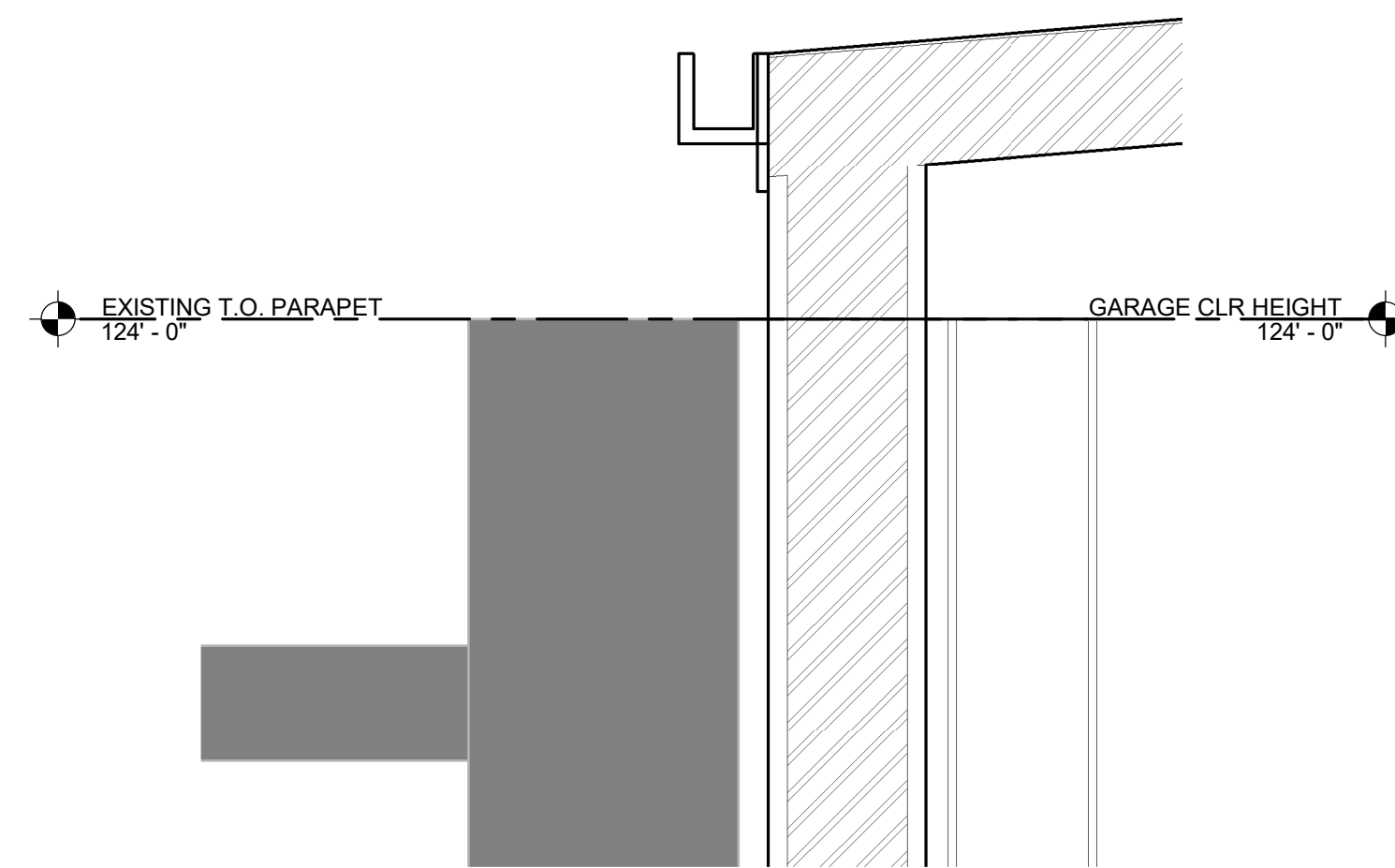
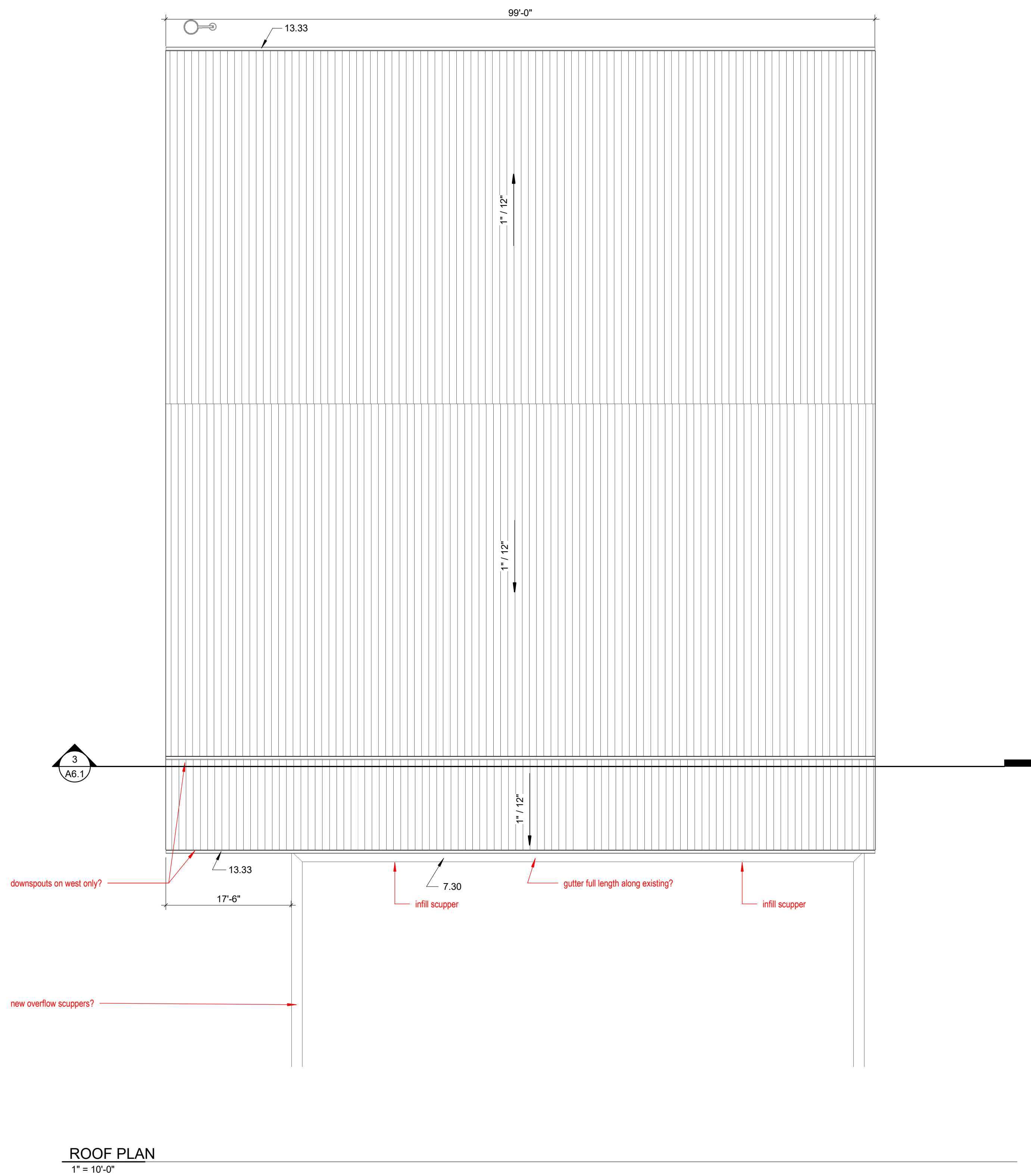


**FIRST FLOOR PLAN**  
 1" = 10'-0"

PROJECT NO.:	DRAWN BY:
1849B	ADG
DATE	COPYRIGHT
1.4.2021	2018
PROJECT	
CTE ADDITION	
HURON SCHOOL DISTRICT 2-2	
HURON, SD	
SHEET	
FIRST FLOOR PLAN	

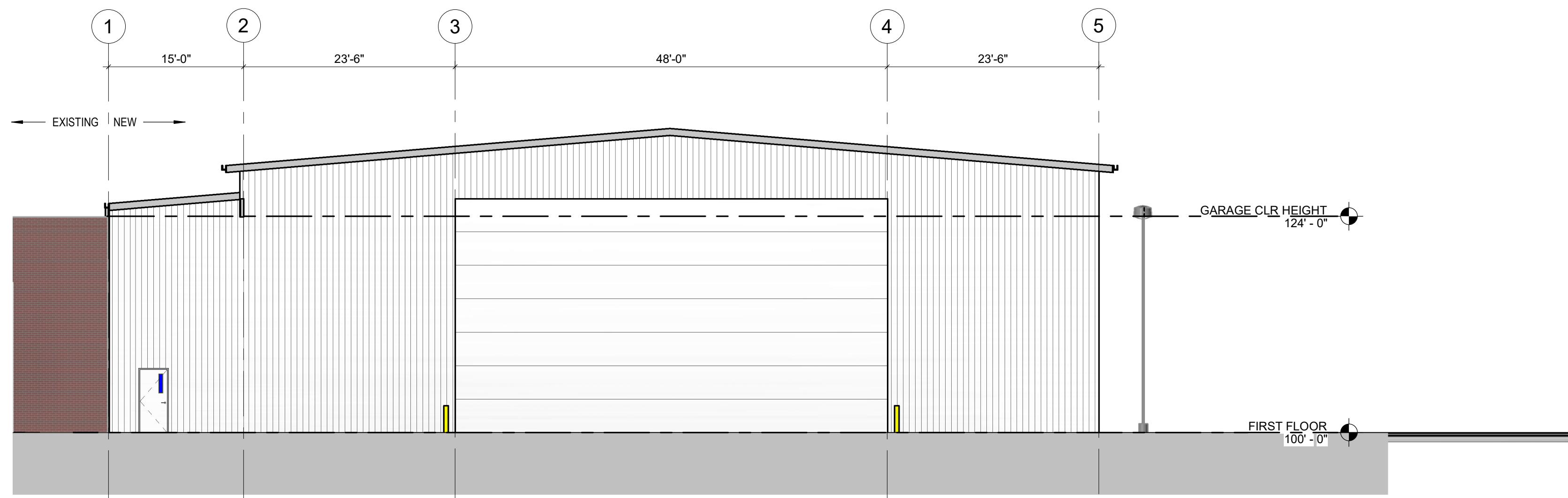
KEYNOTES

13.33 PRE-FINISHED GUTTER

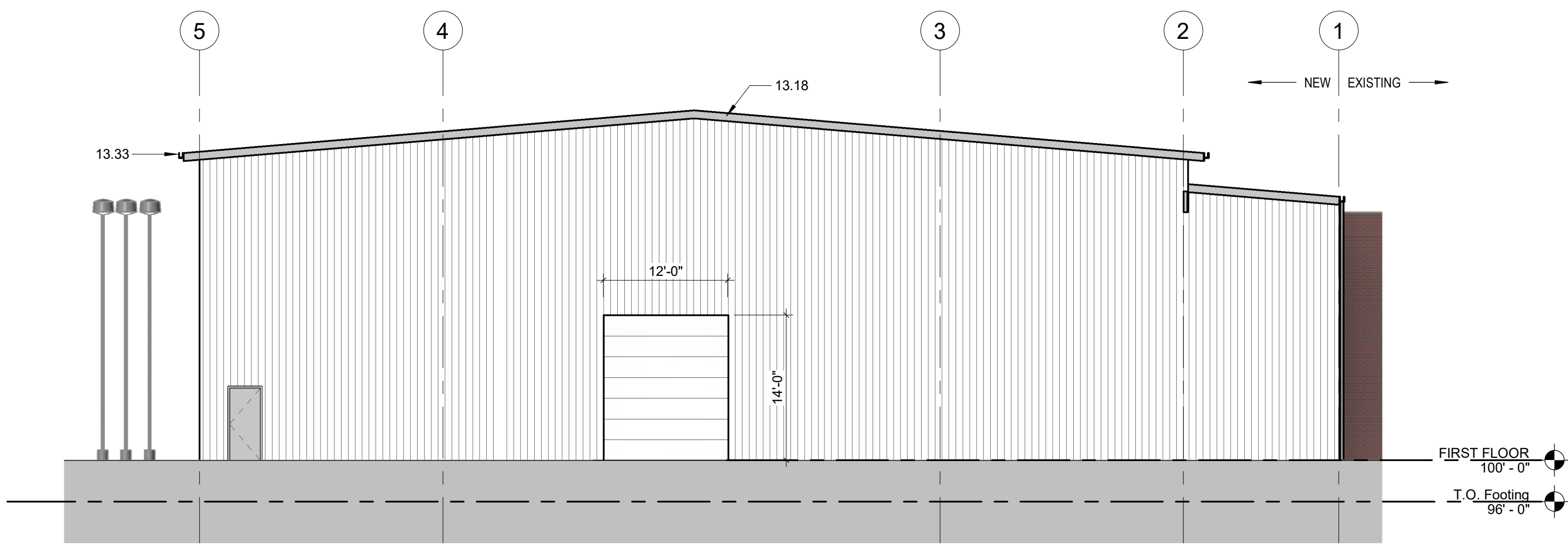


PROJECT NO.:	DRAWN BY:
1849B	ADG
DATE	COPYRIGHT
1.4.2021	2018
PROJECT	
CTE ADDITION	
HURON SCHOOL DISTRICT 2-2	
HURON, SD	
SHEET	
ROOF PLAN & DETAILS	

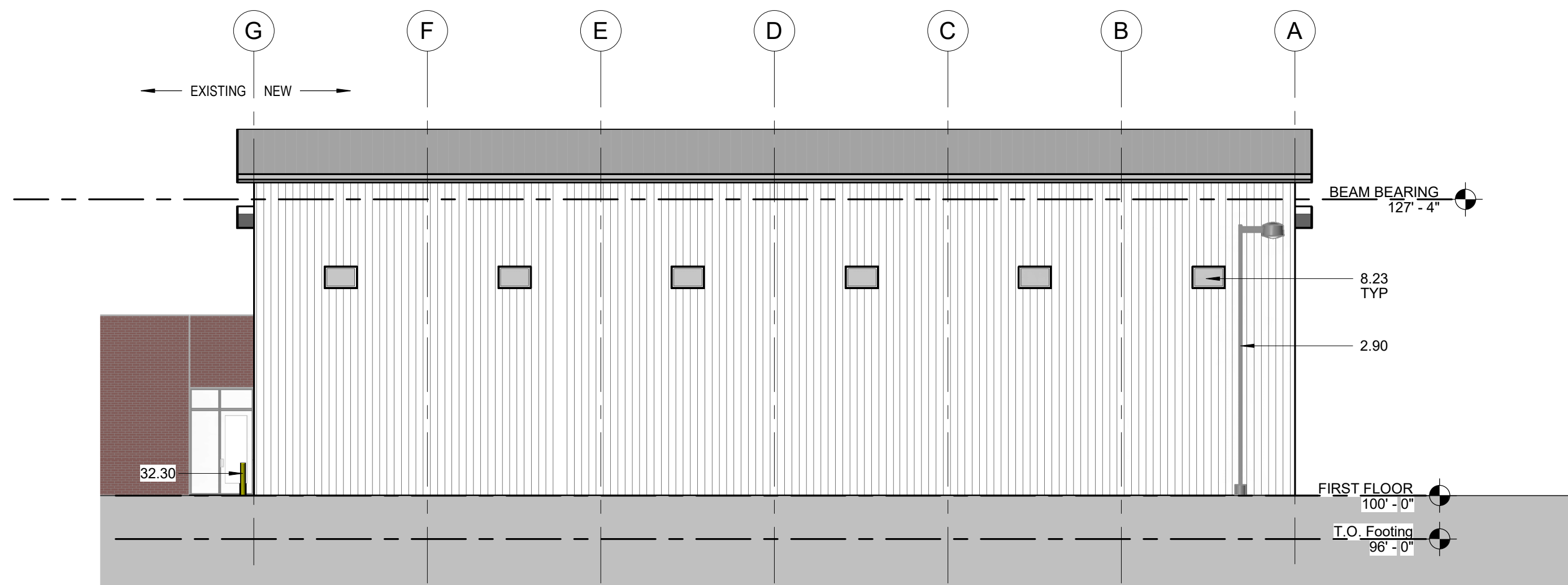




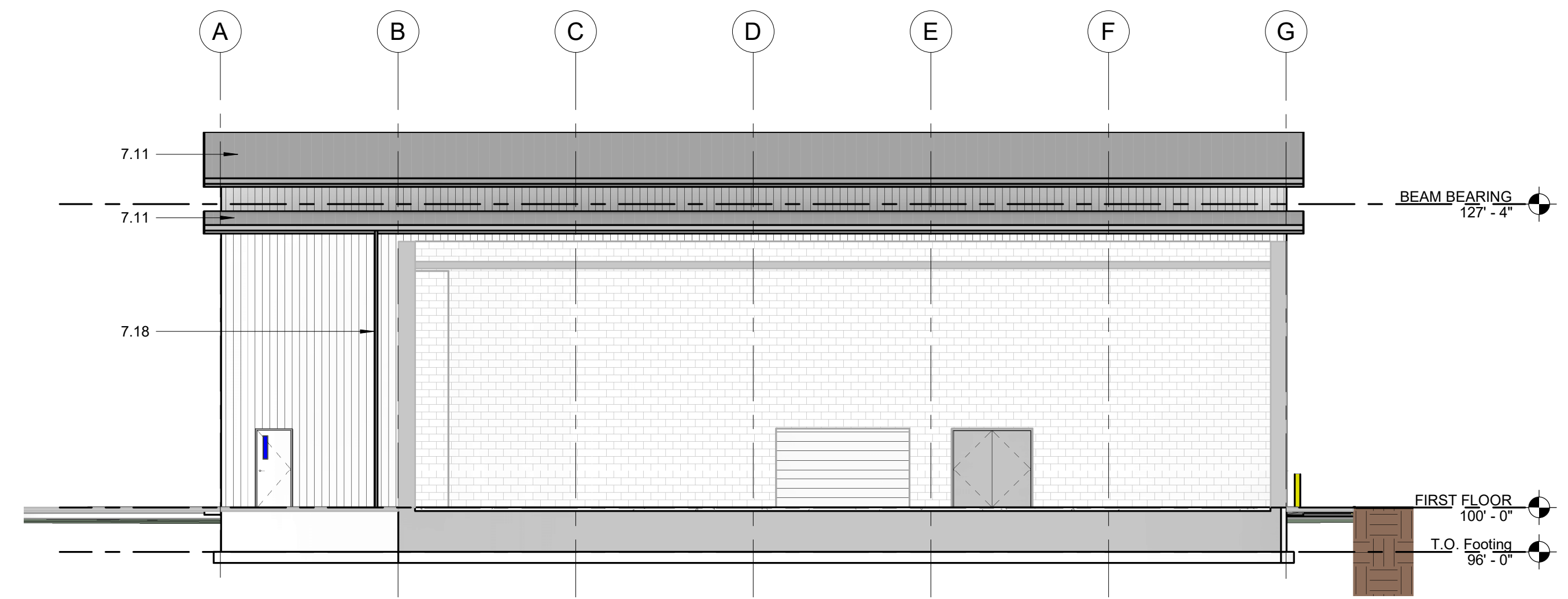
1 EAST ELEVATION  
1" = 10'-0"



2 WEST ELEVATION  
1" = 10'-0"



3 NORTH ELEVATION  
1" = 10'-0"



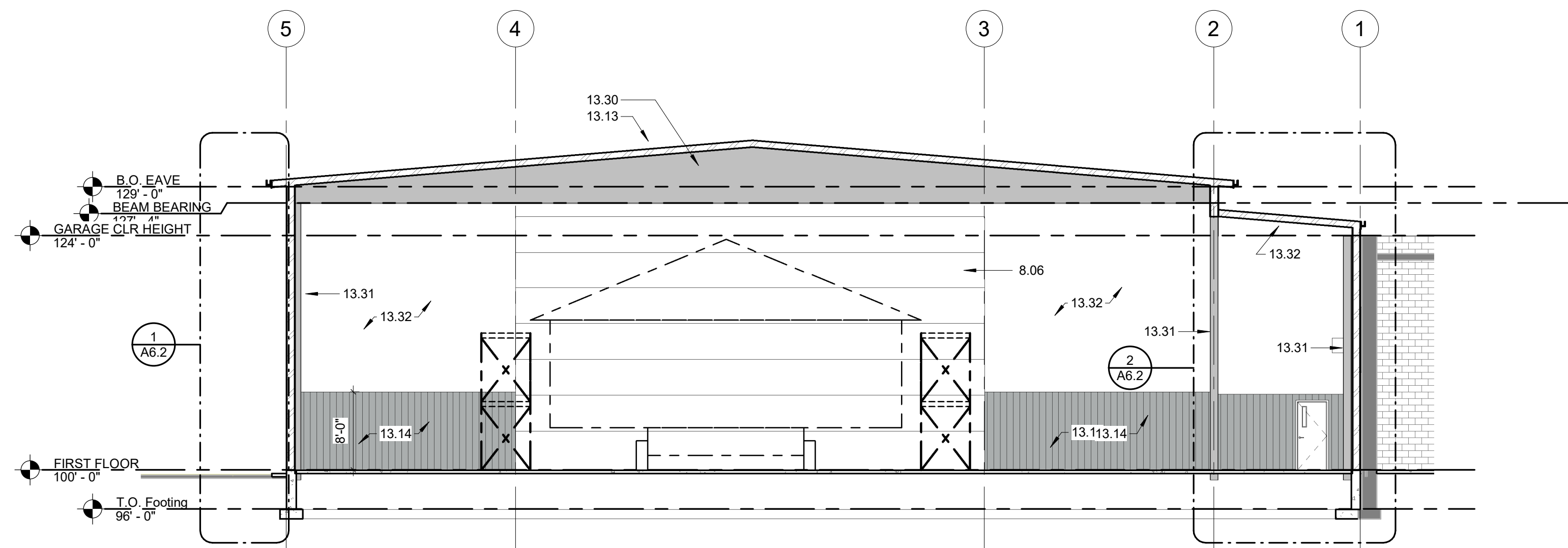
4 SOUTH ELEVATION  
1" = 10'-0"

KEYNOTES

- 2.90 PROTECT EXISTING POLE LIGHT
- 7.11 STANDING SEAM ROOF
- 7.18 PREFINISHED METAL DOWNSPOUT
- 8.23 WINDOW
- 13.18 TYP. METAL BUILDING TRIMS (PREFINISHED)
- 13.33 PRE-FINISHED GUTTER
- 32.30 PIPE BOLLARD

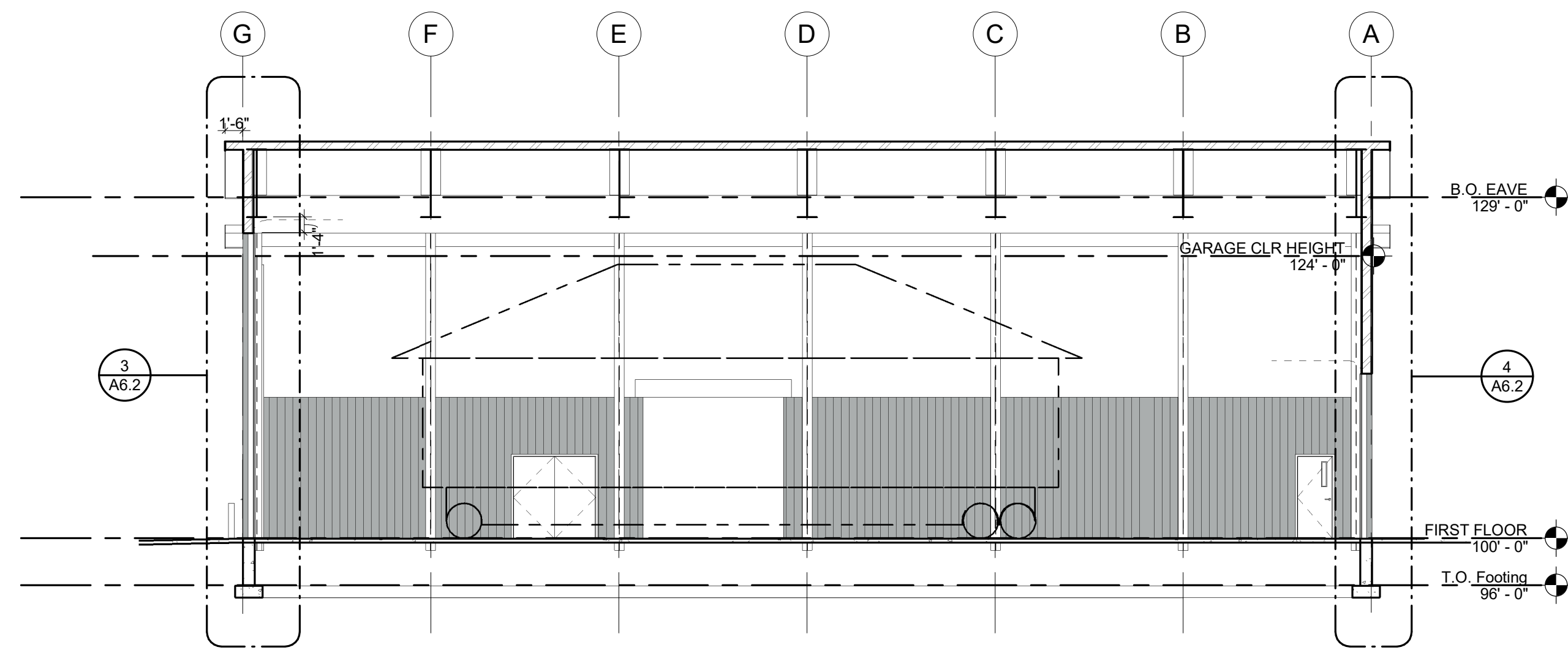
GENERAL NOTES

- A. ANY DISCREPANCIES BETWEEN THE SPECIFICATIONS AND DRAWINGS SHALL BE BROUGHT TO THE ATTENTION OF THE ARCHITECT FOR RESOLUTION PRIOR TO WORK.
- B. SEE CIVIL, STRUCTURAL, MECHANICAL AND ELECTRICAL DRAWINGS FOR ADDITIONAL INFORMATION.
- C. WALL MOUNTED FIXTURES ARE TO BE CENTERED OVER DOORS, BETWEEN WINDOWS, ETC., WHERE APPLICABLE.
- D. ALL LOUVERS, WALL CAPS, ETC. TO BE AUTO BODY PAINTED, NO ON-SITE PAINTING ALLOWED.
- E. COORDINATE DIVISIONS 22, 23 AND 26 KEYNOTED ITEMS WITH MECHANICAL AND ELECTRICAL.
- F. PAINT EXTERIOR METAL U.O.N.

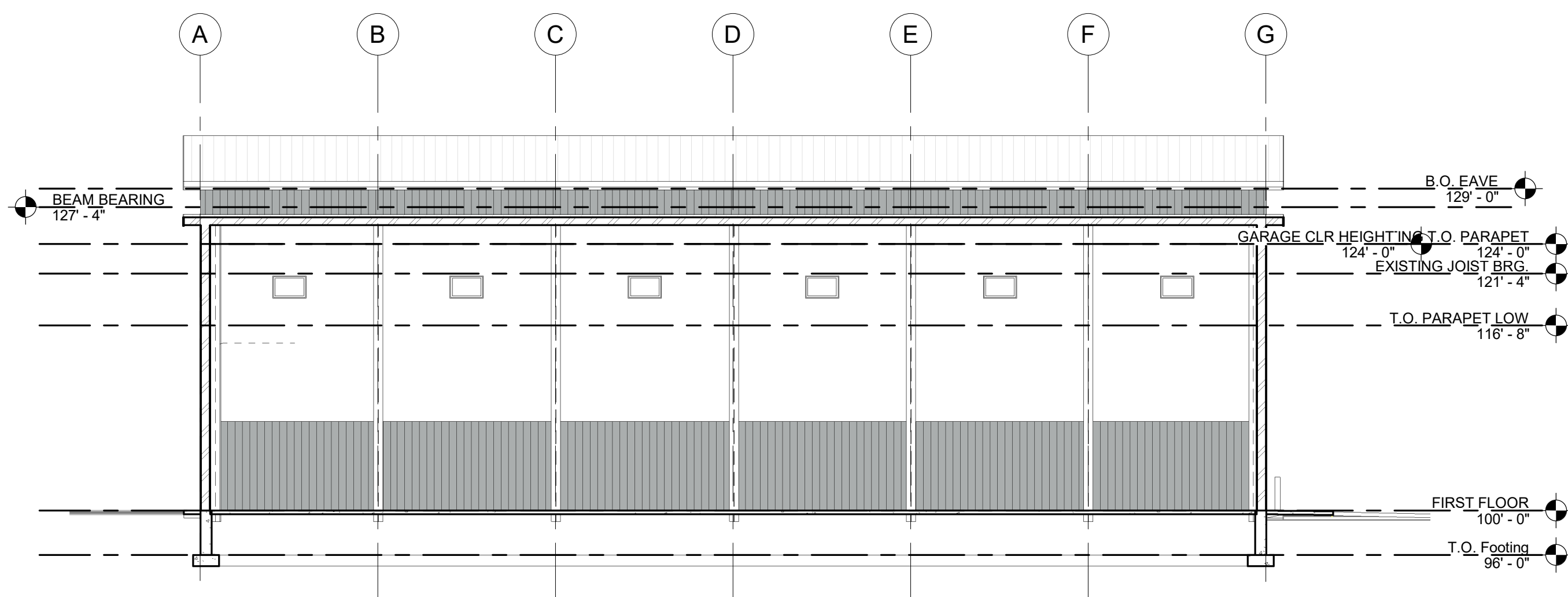


- 8.06 OVERHEAD DOOR
- 13.13 PREFINISHED METAL STANDING SEAM ROOF
- 13.14 PREFINISHED METAL WALL PANEL
- 13.30 PRE-ENGINEERED STRUCTURAL BEAM
- 13.31 PRE-ENGINEERED STRUCTURAL COLUMN
- 13.32 METAL BUILDING VAPOR BARRIER FACED INSULATION (R-25)

1 BUILDING SECTION 1  
1" = 10'-0"



2 BUILDING SECTION 2  
1" = 10'-0"



3 Section 4  
1" = 10'-0"