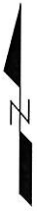
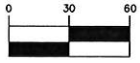


PLAT OF BLOCK 1 JEFFERSON SCHOOL ADDITION TO THE CITY OF HURON, BEADLE COUNTY, SOUTH DAKOTA



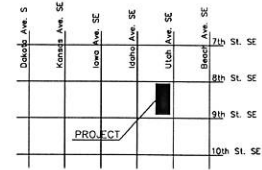
GRAPHIC SCALE



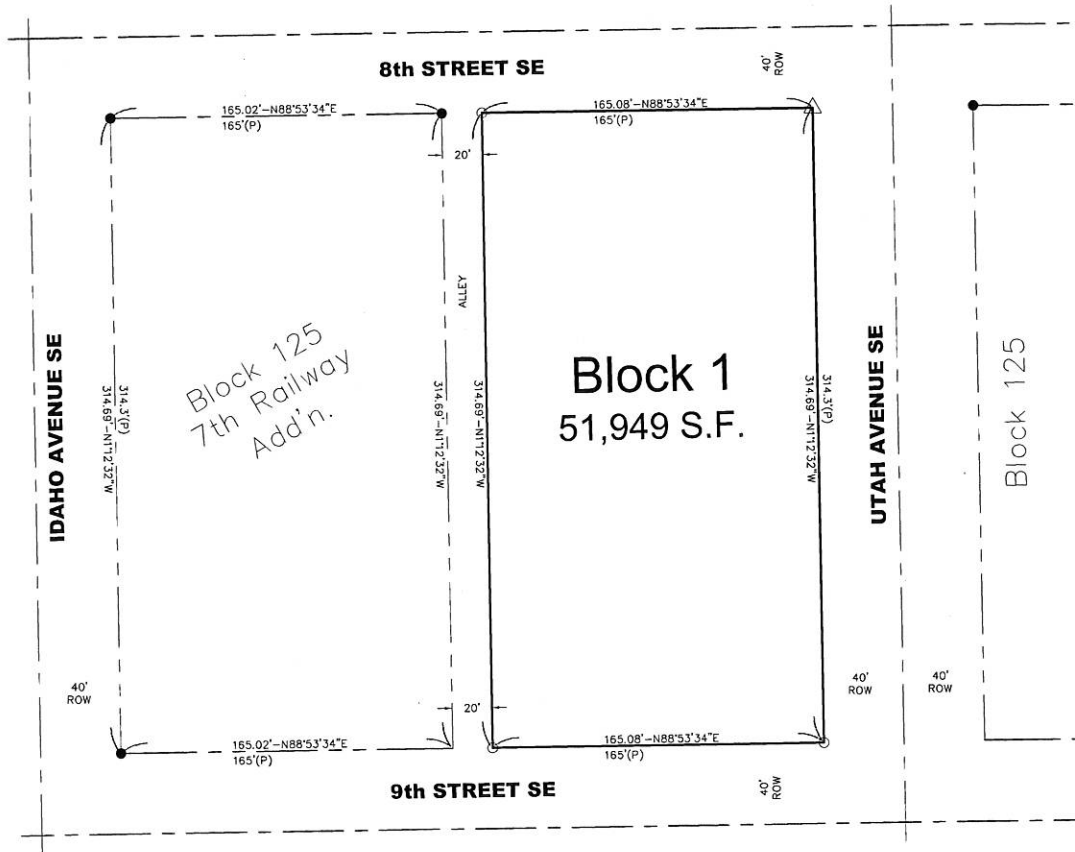
(IN FEET)
1 inch = 60 ft.

*BASIS OF BEARING AND DISTANCE FOR THIS PLAT IS SOUTH DAKOTA STATE PLANE NORTH

LEGEND	
△	SAWED "X" SET
○	5/8" REBAR SET
●	W/CAP #4888
●	FOUND PIN
—	LOT LINE
- - -	ROAD CENTERLINE
- · - · -	EXISTING PROPERTY LINE
100'(P)	PLATTED DISTANCE



City of Huron, SD
VICINITY MAP
NTS

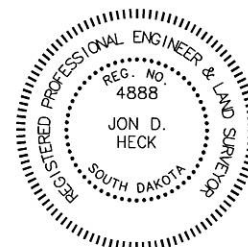


SURVEYOR'S CERTIFICATE

I, JON D. HECK, A REGISTERED LAND SURVEYOR IN THE STATE OF SOUTH DAKOTA, DO HEREBY CERTIFY THAT I DID, ON OR BEFORE FEBRUARY 19, 2016 SURVEY THAT PORTION OF LAND RESERVED FROM BLOCK 88 OF THE SIXTH RAILWAY ADDITION TO THE TOWN OF HURON, BEADLE COUNTY, SOUTH DAKOTA; AND THAT PORTION OF LAND RESERVED FROM BLOCK 125 OF THE SEVENTH RAILWAY ADDITION TO THE TOWN OF HURON, BEADLE COUNTY, SOUTH DAKOTA AS SHOWN ON THE ABOVE PLAT. THAT PORTION OF LAND HEREAFTER BE KNOWN AND DESCRIBED AS "BLOCK 1 JEFFERSON SCHOOL ADDITION" TO THE CITY OF HURON, BEADLE COUNTY, SOUTH DAKOTA CONTAINING THE AREAS AS SHOWN. I FURTHER CERTIFY THAT THE ABOVE PARCELS WERE SURVEYED BY ME OR UNDER MY DIRECT SUPERVISION AND THAT THE PLAT AS SHOWN IS A TRUE AND ACCURATE REPRESENTATION OF THAT SURVEY.

WITNESS MY HAND AND SEAL THIS _____ DAY OF _____ A.D., 2016.

JON D. HECK
REGISTERED LAND SURVEYOR NO. 4888



PREPARED BY:
JON D. HECK, PE/LS
GOLDSMITH HECK ENGINEERS, INC.
524 N. SYCAMORE AVE., SUITE 1
SIOUX FALLS, SD 57110
(605) 332-9685

**PLAT OF BLOCK 1
JEFFERSON SCHOOL ADDITION
TO THE CITY OF HURON, BEADLE COUNTY, SOUTH DAKOTA**

OWNER'S CERTIFICATE

KNOW ALL MEN BY THESE PRESENTS THAT I, DAVID WHEELER, SCHOOL BOARD PRESIDENT, DO HEREBY CERTIFY THAT THE HURON SCHOOL DISTRICT #2-2 IS OWNER AND PROPRIETOR OF THE FOLLOWING DESCRIBED PROPERTY SITUATED IN THE STATE OF SOUTH DAKOTA AND THE COUNTY OF BEADLE AND CITY OF HURON TO WIT:

THAT PORTION OF LAND RESERVED FROM BLOCK 88 OF THE SIXTH RAILWAY ADDITION TO THE TOWN OF HURON, BEADLE COUNTY, SOUTH DAKOTA; AND THAT PORTION OF LAND RESERVED FROM BLOCK 125 OF THE SEVENTH RAILWAY ADDITION TO THE TOWN OF HURON, BEADLE COUNTY, SOUTH DAKOTA.

HAVE CAUSED A PART OF THE SAME TO BE PLATTED AS "BLOCK 1 JEFFERSON SCHOOL ADDITION" AND DO HEREBY CERTIFY THAT THE HURON SCHOOL DISTRICT #2-2 IS THE UNQUALIFIED OWNER OF ALL THE LAND INCLUDED IN THE PLAT HEREON DRAWN AND THAT SAID LAND IS FREE FROM ANY ENCUMBRANCE WHATSOEVER, AND THAT DEVELOPMENT OF THIS LAND SHALL CONFORM TO ALL EXISTING APPLICABLE ZONING, SUBDIVISION AND EROSION AND SEDIMENT CONTROL REGULATIONS AND THAT HE HAS REQUESTED THE PREPARATION OF THIS PLAT IN COMPLIANCE WITH THE LAWS OF THE STATE OF SOUTH DAKOTA.

I, DAVID WHEELER, SCHOOL BOARD PRESIDENT, DO HEREBY CERTIFY THAT THIS REPLAT WILL NOT PLACE ANY EXISTING LOT OR BUILDING IN VIOLATION OF ANY APPLICABLE ORDINANCE, CODE, REGULATION, OR LAW INCLUDING BUT NOT LIMITED TO ZONING, BUILDING, SUBDIVISION, AND FLOOD PREVENTION.

I FURTHER CERTIFY THAT THIS PLATTING OF SAID DESCRIBED BLOCK 1 JEFFERSON SCHOOL ADDITION TO THE CITY OF HURON, BEADLE COUNTY, SOUTH DAKOTA, DOES HEREBY VACATE A PORTION OF THE FOLLOWING PLATTING(S):

THAT PORTION OF LAND RESERVED FROM BLOCK 88 OF THE SIXTH RAILWAY ADDITION TO THE TOWN OF HURON, BEADLE COUNTY, SOUTH DAKOTA ON FILE AT THE REGISTER OF DEEDS OFFICE IN BOOK 48 PAGE 600, AND THAT PORTION OF LAND RESERVED FROM BLOCK 125 OF THE SEVENTH RAILWAY ADDITION TO THE TOWN OF HURON, BEADLE COUNTY, SOUTH DAKOTA, ON FILE AT THE REGISTER OF DEEDS OFFICE IN BOOK 142 PAGE 269 HEREBY VACATED, BEING SITUATED WITHIN DESCRIBED BLOCK 1 JEFFERSON SCHOOL ADDITION TO THE CITY OF HURON, BEADLE COUNTY, SOUTH DAKOTA AS SURVEYED.

IN WITNESS WHEREOF SAID, DAVID WHEELER, HAS SET HIS HAND THIS _____ DAY OF _____ A.D., 2016.

HURON SCHOOL DISTRICT #2-2, DAVID WHEELER, SCHOOL BOARD PRESIDENT

STATE OF SOUTH DAKOTA)

COUNTY OF BEADLE)

ON THIS _____ DAY OF _____, A.D. 2016, BEFORE ME, A NOTARY PUBLIC, PERSONALLY APPEARED DAVID WHEELER, WHO ACKNOWLEDGED HIMSELF TO BE THE PRESIDENT OF THE HURON SCHOOL BOARD WHO, BY ME DULY SWORN, DID SAY THAT THE HURON SCHOOL DISTRICT #2-2 IS THE OWNER NAMED IN THE FOREGOING INSTRUMENT AND THAT HE ACKNOWLEDGED SAID INSTRUMENT FOR THE PURPOSE THEREIN STATED.

NOTARY PUBLIC, MY COMMISSION EXPIRES _____

RESOLUTION BY THE BOARD OF COMMISSIONERS OF HURON, SOUTH DAKOTA

IT WAS MOVED BY _____, SECONDED BY _____, MOTION CARRIED, THAT THE PLAT OF "BLOCK 1 JEFFERSON SCHOOL ADDITION TO THE CITY OF HURON, BEADLE COUNTY, SOUTH DAKOTA" AS DESCRIBED ABOVE AND AS DRAWN HEREON, BE APPROVED AND ACCEPTED IN ACCORDANCE WITH THE PROVISIONS OF SECTION 11-3-6 OF THE SOUTH DAKOTA COMPILED LAWS AND ACTS AMENDATORY THERETO, AND THE MUNICIPAL FINANCE OFFICER IS HEREBY INSTRUCTED TO ENDORSE ON SUCH PLAT A COPY OF THIS RESOLUTION AND TO CERTIFY THE SAME.

I, PAULLYN CAREY, MUNICIPAL FINANCE OFFICER OF THE CITY OF HURON, BEADLE COUNTY, SOUTH DAKOTA, HEREBY CERTIFY THAT THE WITHIN AND FOREGOING IS A TRUE AND CORRECT COPY OF THE RESOLUTION ADOPTED BY THE BOARD OF COMMISSIONERS OF HURON, SOUTH DAKOTA, AT THEIR MEETING ON THE _____ DAY OF _____, A.D., 2016.

PAULLYN CAREY, MUNICIPAL FINANCE OFFICER OF THE CITY OF HURON

I, _____, TREASURER OF BEADLE COUNTY, SOUTH DAKOTA, HEREBY CERTIFY THAT ALL TAXES WHICH ARE LIENS UPON ANY OF THE LAND INCLUDED IN THE FOREGOING PLAT, AS SHOWN BY THE RECORDS OF SAID TREASURER'S OFFICE, HAVE BEEN FULLY PAID.

DATED THIS _____ DAY OF _____, A.D. 2016.

TREASURER, BEADLE COUNTY, SOUTH DAKOTA

I, _____, DIRECTOR OF EQUALIZATION OF BEADLE COUNTY, SOUTH DAKOTA, DO HEREBY CERTIFY THAT I HAVE RECEIVED A COPY OF THIS PLAT THIS _____ DAY OF _____, A.D., 2016.

DIRECTOR OF EQUALIZATION, BEADLE COUNTY, SOUTH DAKOTA

FILED FOR RECORD THIS _____ DAY OF _____, A.D., 2016, AT _____ O'CLOCK ____M., AND DULY RECORDED IN BOOK _____ PAGE _____.

REGISTER OF DEEDS, BEADLE COUNTY, SOUTH DAKOTA

DEPUTY